

# DRESTER 3600

Semi-automatic gun cleaner  
for conventional paints.

*Drester 3600 cleans spray guns efficiently and is designed for use with conventional paints. The machine cleans automatically with circulating thinner and has a manual rinse with clean thinner. During the wash cycle air is blown through the spray guns air channels to keep these free from solvent and fuzz. The gun cleaner is equipped with the unique Drester Teflon Diaphragm pump to give a superior wash result. A built-in extraction prevents contact with hazardous fumes and improves the work environment. Drester 3600 is easy to use and has an ergonomic design. The machine is air powered and can also be obtained in a two-gun model.*



DRESTER



Footpedal for manual clean rinse.      Footpedal for automatic washing.

### Optional Extras

There are several optional products to the Drester 3600, i.e. a 2-Gun Spray Cradle, Extension Hose, Adaptor and Cover Plate. Please contact your Drester distributor for further information.

### Air Connection

Through an integrated air connection, the spray gun is supplied with compressed air for spray-out of the gun.

### Built-in Extraction Unit

Drester 3600 is equipped with an air powered extraction unit that operates when the lid is opened and during manual washing. It efficiently protects the operator from harmful fumes.

### Manual Clean Rinse

An integrated nozzle in the lid is fed with clean thinner for manual rinse. This reduces solvent consumption and removes stubborn deposits. The manual washing nozzle is activated by a foot pedal.

### Spray out Funnel

Solvent goes back into the machine and fumes are removed by the extraction unit when spraying out the spray gun through the funnel in the lid.

### Air Flow

An air flow through the gun prevents solvent and contaminants from penetrating into the air connections during the cleaning cycle.

### Interior

The spray cradle is designed to give excellent cleaning results on all types of spray guns, both inside and out. It can easily be removed when cleaning the washing compartment. The Drester 3600 is also available with a spray cradle for cleaning two spray guns simultaneously. The wash basin is made of galvanized steel without any welding seams.

### The Pump

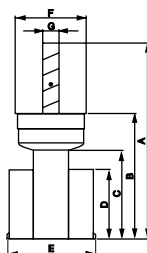
The Drester 3600 is equipped with the powerful Drester Teflon Diaphragm pump for an efficient automatic wash of the spray gun. The automatic wash starts by pressing a footpedal and runs for 1.5 min with recirculating solvent.

### Moisture Trap and Regulator

The moisture trap prevents water and contaminants from penetrating the air system and the regulator ensures correct air pressure.

## Technical Data

Working pressure: 7-12 bar (100-180 psi)  
 Air consumption: 250 l/min (9 c.f.m.)  
 Extraction capacity: 140 m<sup>3</sup>/h (82 c.f.m.) with 15m (49 ft) extraction duct.  
 180 m<sup>3</sup>/h (106 c.f.m.) with 5m (16 ft) extraction duct.  
 Extractor diameter: 125 mm (5") Weight (net): 30 kg (67 lb)



#### Measurements

A: 1545 mm\* (60 3/4")      E: 700 mm (27 1/2")  
 B: 990 mm\* (39")      F: 563 mm (22")  
 C: 720 mm\* (28 1/2")      G: 125 mm (5")  
 D: 540 mm\* (21 1/4") Max. drum height

\* Extendable with 100 mm (4") with optional extra No. 9140, Cover Plate



© Hedson Technologies AB



**HEDSON TECHNOLOGIES AB**  
 Hammarvägen 4  
 SE-232 37 ARLÖV, Sweden  
 Phone +46 40 534200  
 Fax +46 40 432901