

TROUBLE SHOOTING GUIDE FOR DRESTER 800GC

(This guide also applies to Drester 3600GC)



Note: Component numbers refer to the enclosed pneumatic diagram 13588.

PROBLEM	DIAGNOSIS	CURE
THE MACHINE STARTS, BUT STOPS AFTER A FEW SECONDS:	<p>THE CAPILLARY TUBE (#12) OR THE TIMER COULD BE FAULTY</p> <p>The capillary's needle may have come lose. In this case, the timer will lose the pressure too quickly, and the machine will only operate for a few seconds.</p>	Remove the capillary's white sleeve. Make sure the needle is still attached to the brass piece. If it does not solve the problem, check for leakage between the capillary and the filter (#13).

SYMPTOM	DIAGNOSIS	CURE
THE MACHINE STARTS, BUT WILL NOT STOP:	<p>THE CAPILLARY (#12) COULD BE FAULTY</p> <p>The capillary can be contaminated and blocked by dirt or water, especially if the compressed air does not go through a proper filter and water-trap before entering the machine. When the capillary is blocked, it will not let air through from the timer, hence the timer will remain in open position.</p> <p>THE TIMER (#23) COULD BE FAULTY</p> <p>The timer can remain in its open position if it is contaminated with dirt or water. To check this, remove the capillary (#12) and the filter-unit (#13). By removing these two items, the timer should close immediately after starting the automatic wash-cycle. If it does not close, there is a problem with the timer.</p> <p>THE FILTER-UNIT (#13) COULD BE BLOCKED</p> <p>To check this, remove the capillary (#12) and the filter-unit (#13). Fit the capillary directly on to the timer and test the machine. If the machine now operates with normal washing- time, the filter-unit is blocked.</p> <p>THE FOOT PEDAL (#32) COULD BE LEAKING AIR TO THE TIMER</p> <p>To check this, remove the air-line from fitting #14. Put the air-line in a glass of water and see if air-bubbles are coming out of the air-line. If it does, the foot valve is leaking air. This can be caused by dirt, collected under the foot valve's knob.</p>	<p>Replace the capillary.</p> <p>Replace the timer.</p> <p>Replace the filter-unit.</p> <p>Keep the foot pedal pressed-down and pull the air-line gently to the side about 1/2". Thereby, the foot valve uses another spot of the air-line. Dismantle and clean the Foot valve, or replace it. When fitted to the machine, the knob of the foot valve should be free to move a little bit, and not firmly jammed.</p>

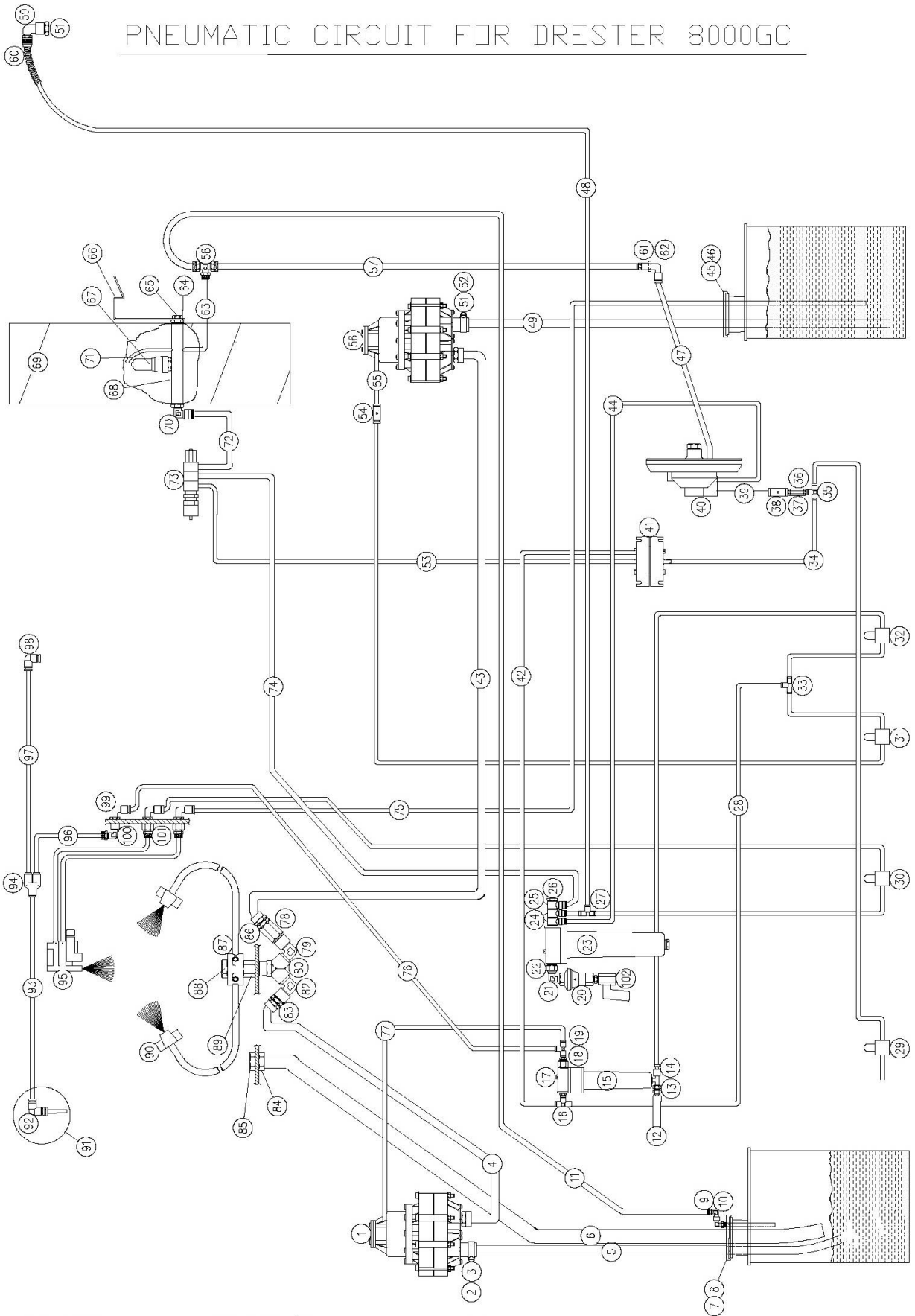
SYMPTOM	DIAGNOSIS	CURE
<p>CLEANING PERFORMANCE NOT GOOD:</p>	<p>BLOCKED NOZZLES (53) ? With time the Nozzles of the Spray Cradle (52) can be obstructed by paint residuals.</p> <p>CENTER PART MISSING IN NOZZLES (53) ? This may have got lost, perhaps during cleaning of nozzle (see picture 10726). In this case pressure build up in the spray cradle will not take place.</p> <p>POOR AIR SUPPLY ? The machine needs 7-12 bar (110-180 psi) <u>when in operation</u>. Long airlines with a small diameter will reduce the pressure even if the compressor is large enough to supply the air needed.</p> <p>PRESSURE REGULATOR (46) OF THE GUN CLEANER IS WRONGLY ADJUSTED ? The regulator is adjusted at the factory to 6,5 bar. If the regulator has been replaced with a spare part, the regulator must be adjusted to this pressure.</p> <p>PROBLEM BEING THE SOLVENT ? 1. Solvent that is containing water will perform poorly. 2. Solvent that has been recycled over and over again will gradually loose it's cutting edge, since the most aggressive ingredient like for instance acetone will gradually be lost in the recycling process. 3. Some "low cost" solvents available on the market quite simply lack power.</p> <p>PROBLEM BEING THAT THE SPRAY GUN IS WRONGLY POSITIONED IN THE MACHINE ? If not positioned correctly, the gun will not be flushed the way it should. Select the extension pipe that fits the gun the best. Special extension pipes are available.</p> <p>PROBLEM BEING CLEANING TIME ? The normal cleaning time is 1,5 minute.</p>	<p>Remove and clean the Nozzles according to picture 10726.</p> <p>Check all nozzles and fit new ones if necessary.</p> <p>Make sure that the machine gets 7-12 bar (110-180 psi) <u>during operation</u>.</p> <p>Check and if necessary adjust the regulator to 6,5 bar. This can be measured in airline 7 or 4. (on the DRESTER 9000 you can read the pressure directly on the pressure gauge fitted onto the regulator).</p> <p>Replace the solvent</p> <p>Top up the solvent with acetone, or replace the solvent completely.</p> <p>Replace the solvent</p> <p>Carefully study pictures below showing how to place the gun in the machine. Note that as you apply the "Trigger Clip" the needle of the gun should be screwed all the way back to open the paint passage of the gun as much as possible.</p> <p>If the time is too short, then please see trouble shooting above.</p>

SYMPTOM	DIAGNOSIS	CURE
EXTRACTION WILL NOT START WHEN OPENING THE LID:	PRESSURE REGULATOR (46) OF THE GUN CLEANER WRONGLY ADJUSTED ? The regulator is adjusted at the factory to 6,5 bar. If the regulator has been replaced with a spare part, the regulator must be adjusted to this pressure. If the pressure is too high, the safety valve will lock itself in one position, and the extraction will not start.	Check and if necessary adjust the regulator to 6,5 bar. This can be measured in airline 7 or 4.
	THE SAFETY VALVE (48) IS OUT OF ORDER ?	Replace the Safety Valve.
	THE EXTRACTOR (55) OUT OF ORDER ? After being used for years, the air outlets of the nozzle inside the extractor can be obstructed and jammed by build-up of paint residuals.	Clean out or replace the Extractor, or just the nozzle inside.

SYMPTOM	DIAGNOSIS	CURE
SOUNDS OF AN AIR LEAK:	FAULTY PRESSURE REGULATOR (46) ?	Replace the Pressure Regulator. Make sure that it is adjusted to 6,5 bar.
	FAULTY MOISTURE TRAP (47) ? If the air valve fitted to the Moisture Trap (air inlet of the machine) is opened too quickly, the float inside the Moisture Trap can collapse.	Replace the Moisture Trap.

SYMPTOM	DIAGNOSIS	CURE
THE PUMP WILL NOT WORK:	PUMP (42) GETS NO AIR ?	Remove airline and start the machine to check if air is reaching the pump.
	SOLVENT LINES OBSTRUCTED ?	Loosen the lines and check that they are not obstructed.
	VALVES OBSTRUCTED ?	Dismantle the valves following picture 10923 and clean them if necessary.
	SNAP SPRING BROKEN ?	Open the pump following pictures 11584 and replace the spring if broken.
	STILL DOES NOT WORK ?	Replace the Pump

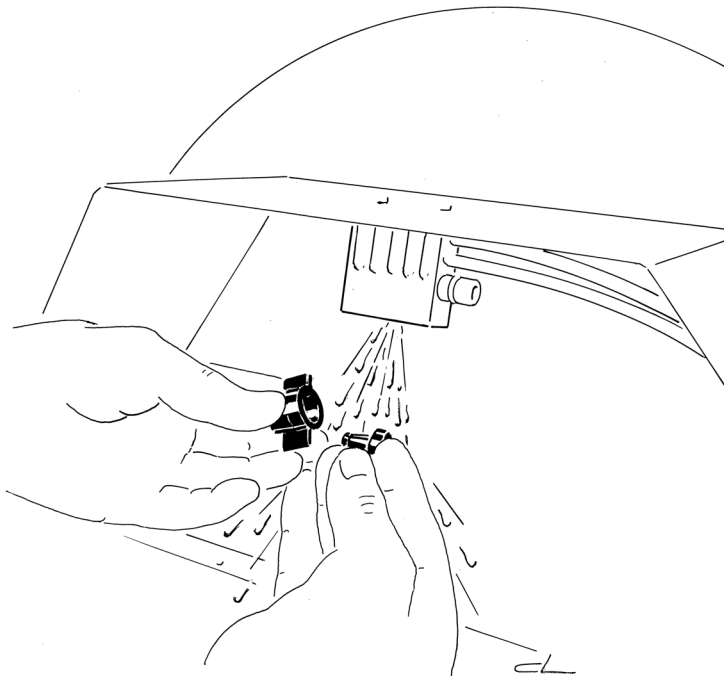
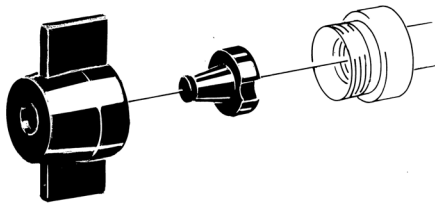
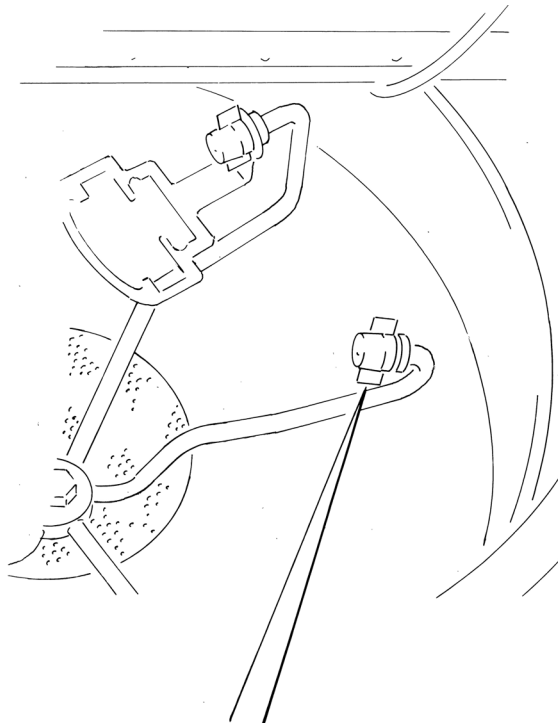
PNEUMATIC CIRCUIT FOR DRESTER 8000GC



INSTR: 13588

REV: 050127/TB

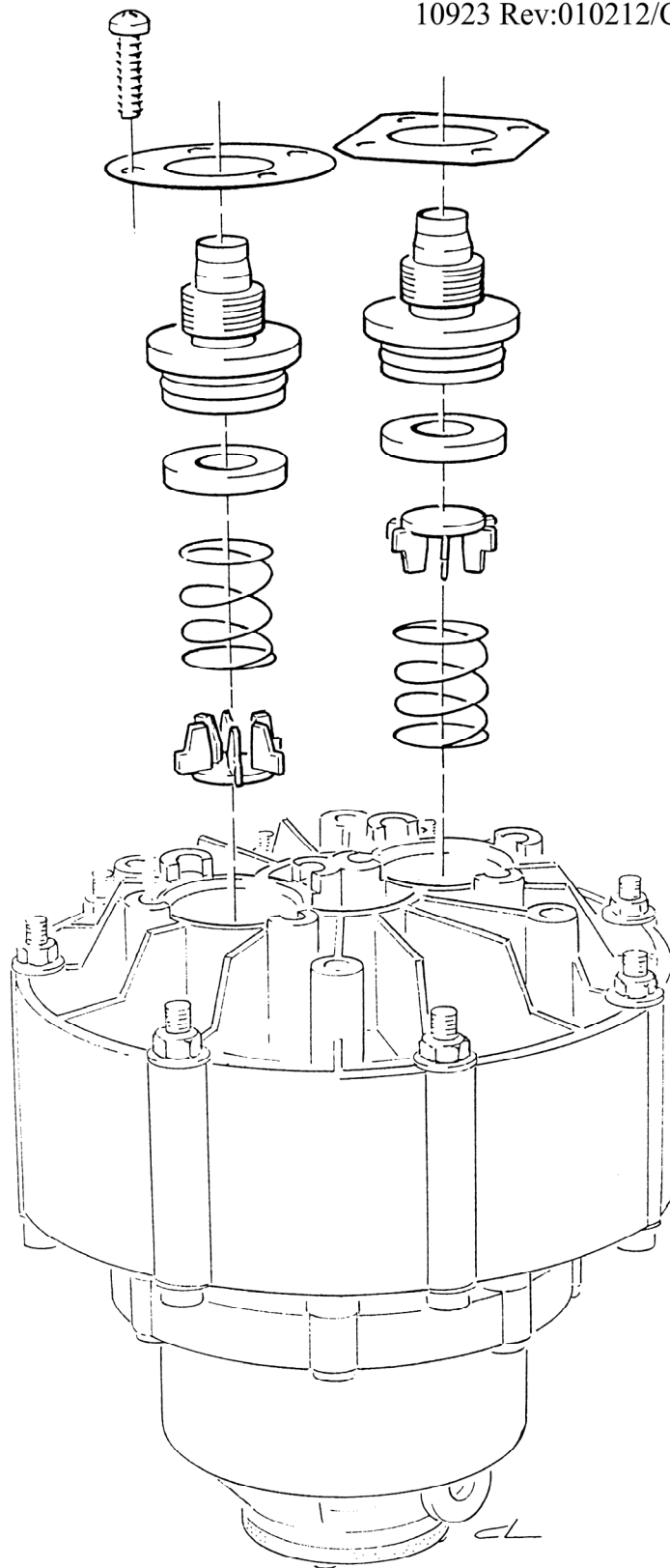
APPR:

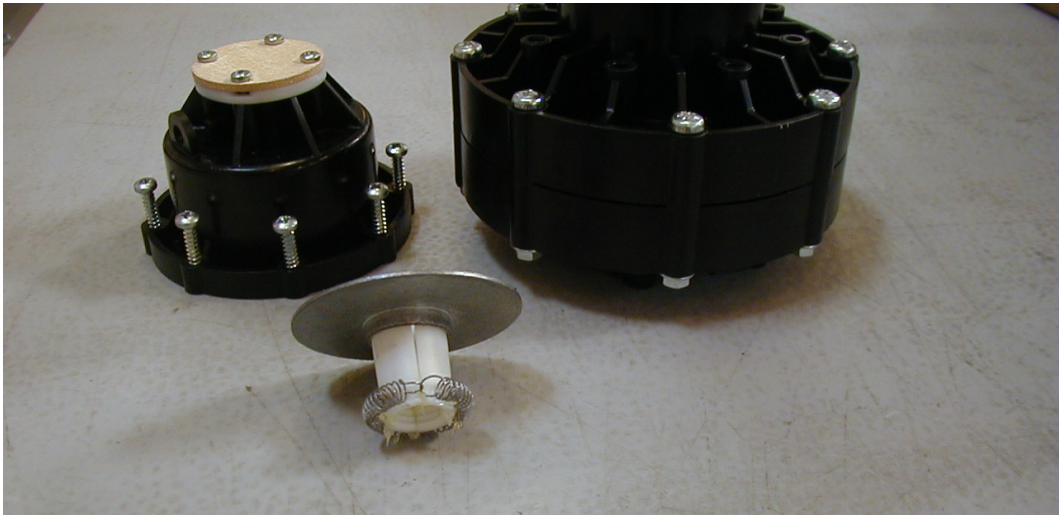
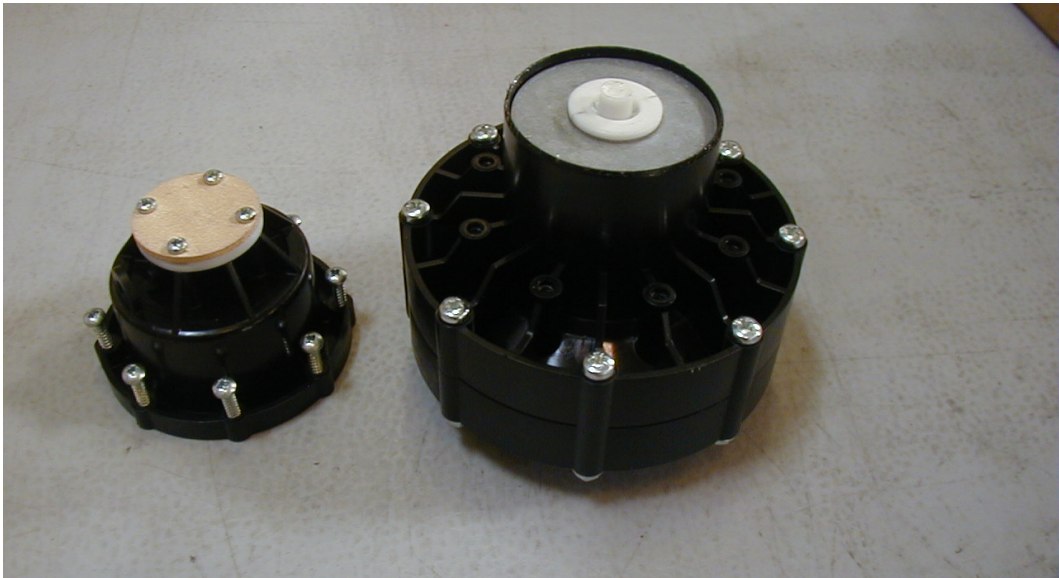


10726 REV:010222/CN



10923 Rev:010212/CN





(11584 REV:020131/Bom)